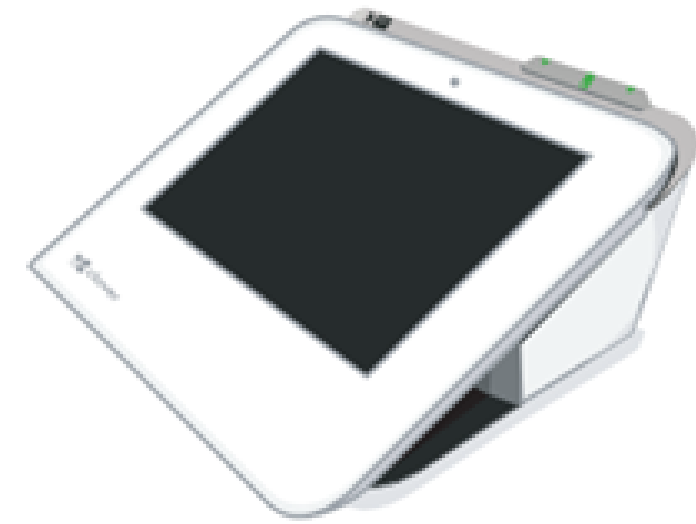
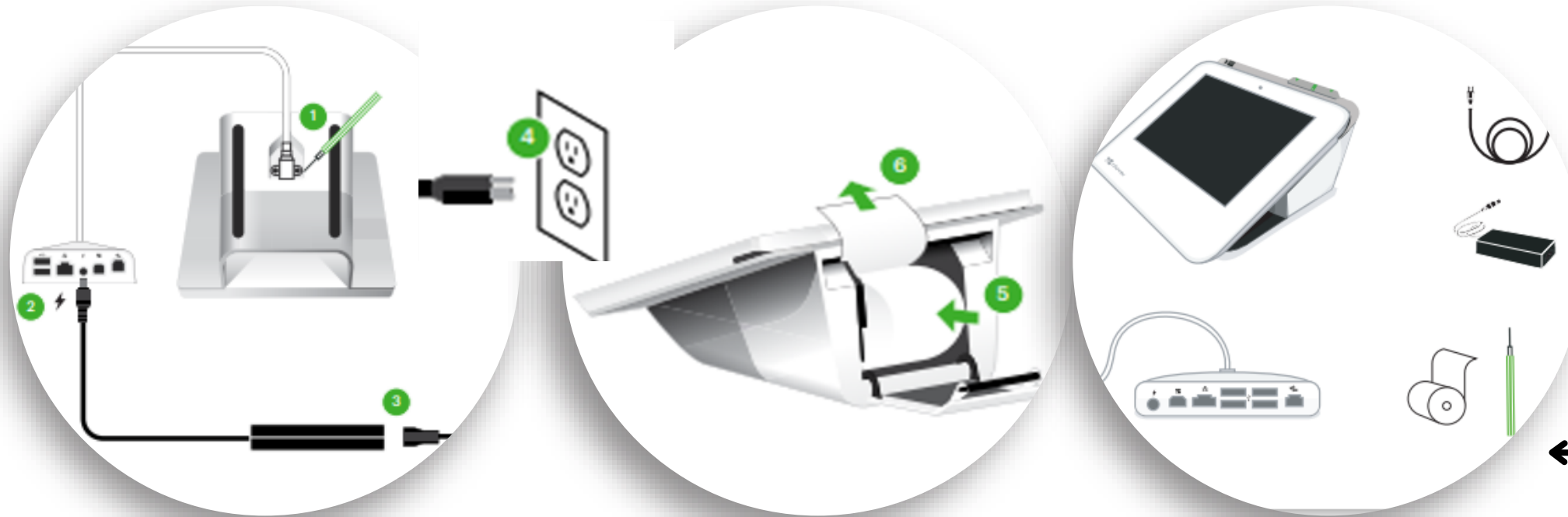


# Clover Mini Quick Start Guide



← Your Clover Mini Starter Kit includes:

## Steps to setting up the Clover Mini

**Step 1)** Once your device is shipped, “Clover Support” will send your registered email a tracking number & activation code for your device.

**Step 2)** Once terminal is unpacked, please follow the YouTube video for steps on connectivity and wiring. With the provided screw driver, please secure the wire.

**Step 3)** Plug in the power cord and wait until the Clover logo pops up. Once turned on please follow the prompts ie. English or/ French, Wifi connection, etc.

**Step 4)** After the Clover Mini launches: Open the 'Sale' app and begin processing.

Click link for step by step walk through for Mini:  
**Setting up [Clover Mini - YouTube](#)**

**You can also click on the link to see further help on your device: [Clover Help](#)**

**Please contact Merchant Services if you have any questions:  
[merchantservices@universalpayments.ca](mailto:merchantservices@universalpayments.ca)**

