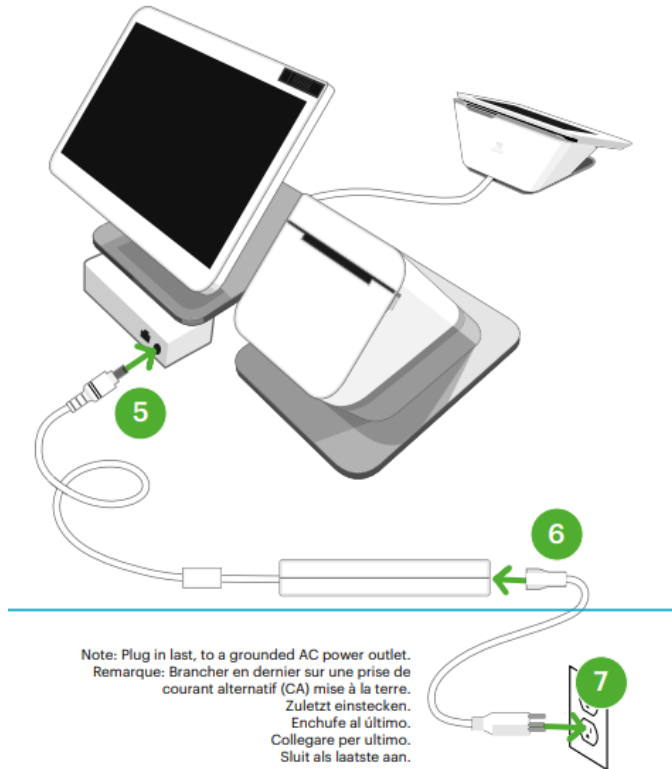
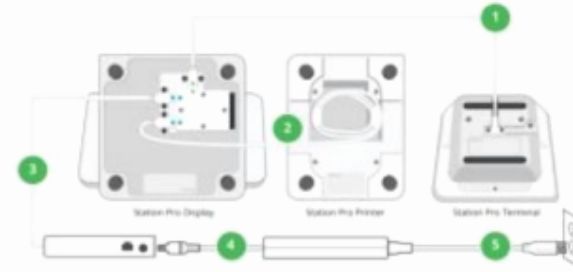


Clover Duo Quick Start Guide



Setup Overview

Step 1: Put together your Station Pro by connecting all the parts as outlined in the Clover Station Pro Quick Setup Guide.



Step 2: Plug the power bricks into a power outlet. The Station Pro will automatically power on.

Step 3: Connect your Station Pro to a network via Mobile (SIM) card, Wi-Fi, or Ethernet. When prompted, we recommend you set up your Wi-Fi connection as this will ensure the device activation runs efficiently.

Step 4: Activate your Station Pro using the activation code sent to you via email from Clover Support (app@clover.com). The email will be sent to the email address associated with your merchant account.

Step 5: Load a roll of paper into the Station Pro printer and tap Test Print.

Step 6: Customize your Station Pro with passcode access, fingerprint access, tips, and locations, and authorize your Station Pro account billing. Once you have reviewed, tap Authorize.

Step 7: Login to your Station Pro using the passcode or fingerprint you setup earlier.

Step 8: Set up your Counter Service Restaurant software including business details, employee profiles and build your menu.

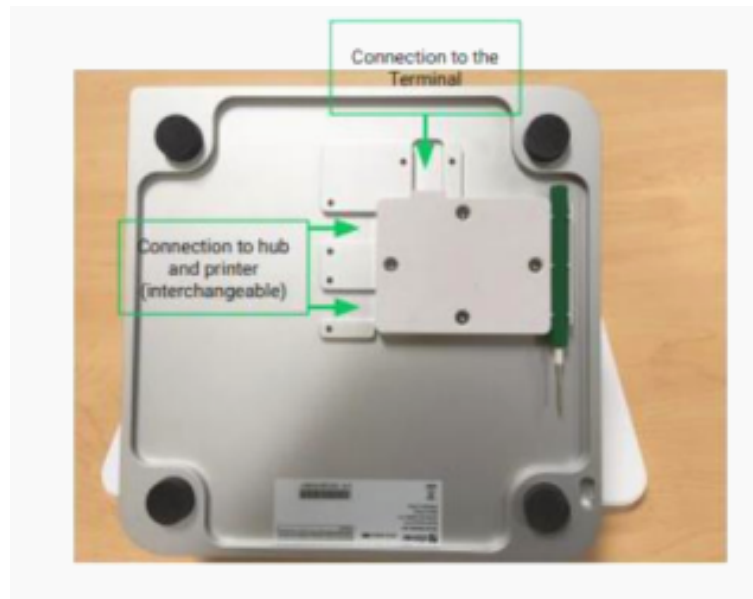
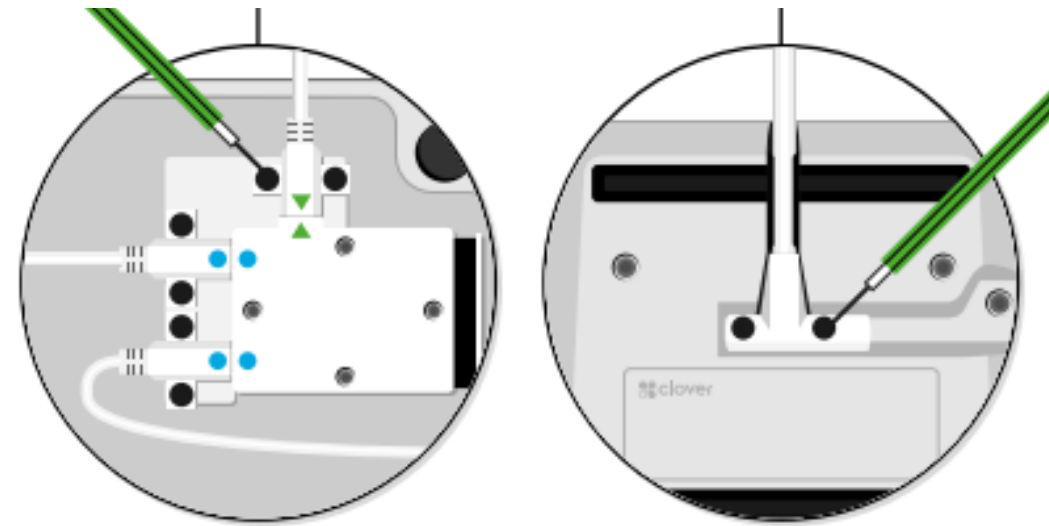
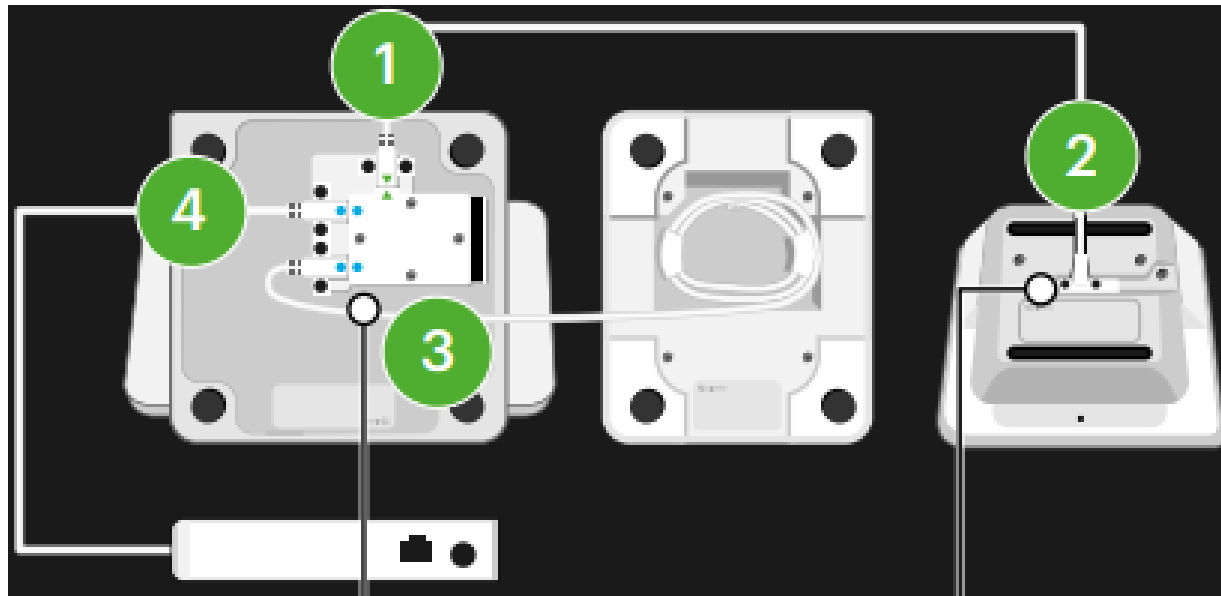


Click link for step by step walk through for Duo:
[Setting up Station Duo - YouTube](#)

Please contact Merchant Services if you have any questions:
merchantservices@universalpayments.ca



Clover Duo Quick Start Guide - Wiring Diagram



Click link for step by step walk through for Duo:
[Setting up Station Duo - YouTube](#)

You can also click on the link to see further help on
your device: [Clover Help](#)

Please contact Merchant Services if you have any questions:
merchantservices@universalpayments.ca

