

Clover Solo Quick Start Guide

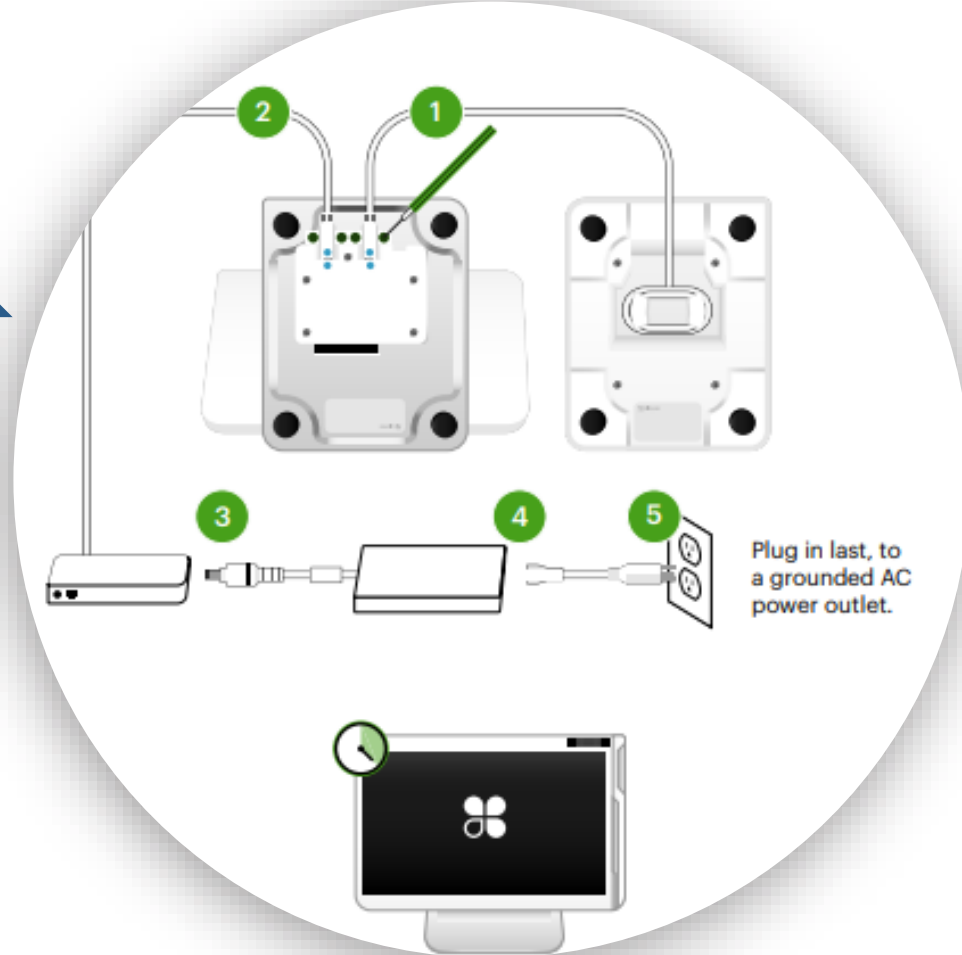
***Solo does not take payments**



Steps to setting up the Clover Solo

- Step 1)** Once your device is shipped, “Clover Support” will send your registered email a tracking number & activation code for your device.
- Step 2)** Once terminal is unpacked, please follow below YouTube video for steps on connectivity and wiring. With the provided screw driver please secure the wires.
- Step 3)** Plug in the power cord and wait for Clover logo to appear. Once turned on please follow the prompts ie. English or/ French, Wifi connection, etc.
- Step 4)** After the Clover Solo launches: Open the ‘Order’ app to manage your dine-in, take-out and delivery services.

Station
printer is
optional



Click link for step by step walk through for Solo:
Setting up [Station Solo - YouTube](#)

You can also click on the link to see further help on
your device: [Clover Help](#)

Please contact Merchant Services if you have any questions:
@merchantservices@universalpayments.ca

