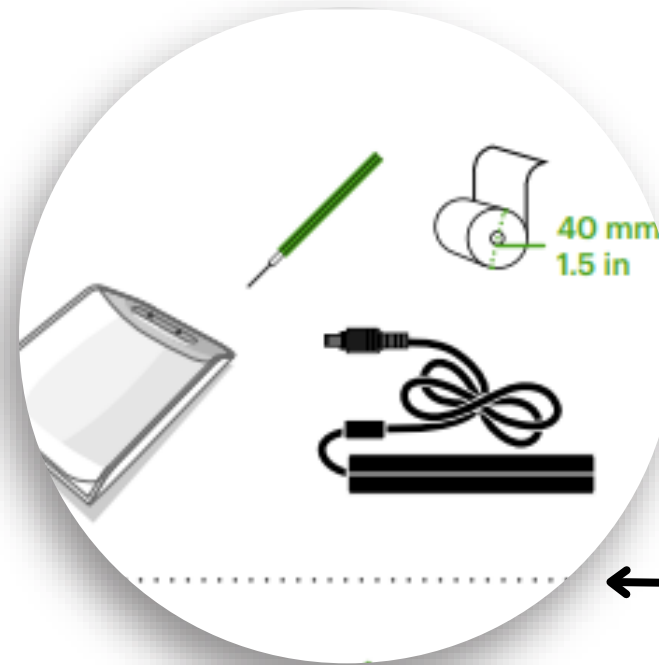
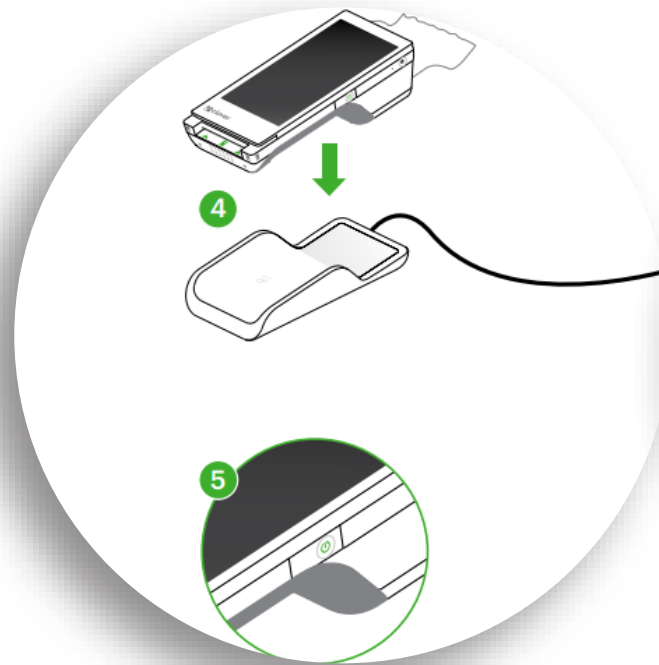
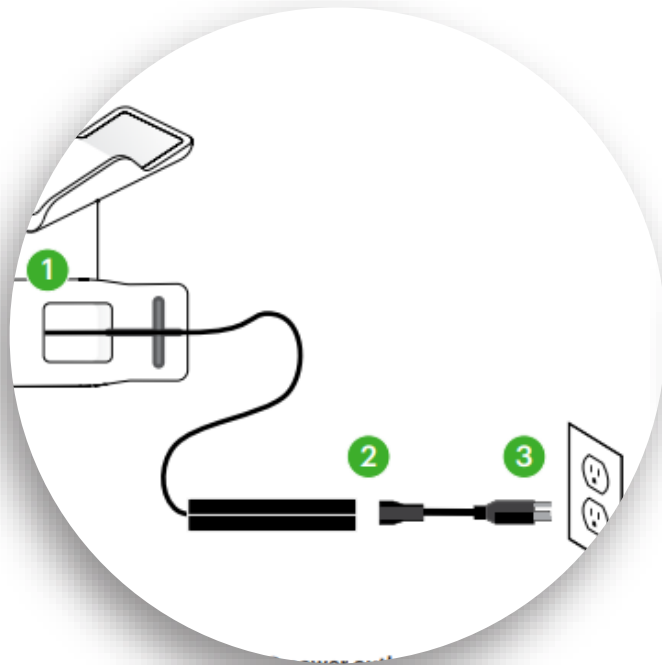


Clover Flex Gen 3 Quick Start Guide



Clover Flex 3



← Your Clover Flex Starter Kit includes:

Steps to setting up the Clover Flex.

- Step 1)** Once your device is shipped, “Clover Support” will send your registered email a tracking number & activation code for your device.
- Step 2)** Once terminal is unpacked, plug in the power cord and turn on the terminal by holding down the power button on the right side (5) until the Clover logo appears.
- Step 3)** Please follow the prompts ie. English or/ French, Wifi connection, etc.
- Step 4)** After the Clover Flex launches: Open the 'Sale' app and begin processing.

Click link for step by step walk through for Flex:
[Setting up Clover Flex \(gen 3\) - YouTube](#)

You can also click on the link to see further help on your device: [Clover Help](#)

Please contact Merchant Services if you have any questions:
merchantservices@universalpayments.ca

